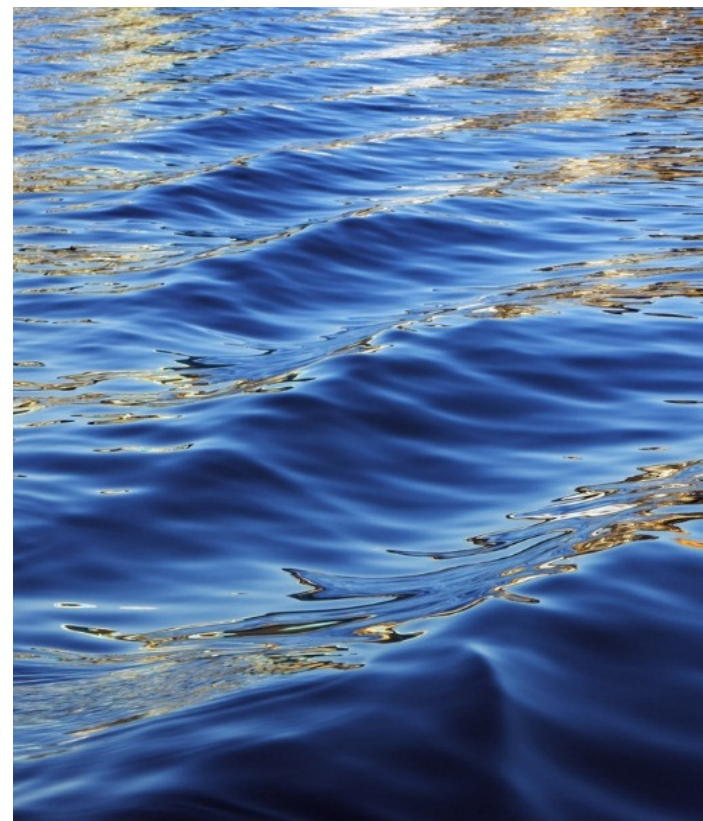




# Introduction to Land Use Planning Presentation to Kanesatake

March 14, 2018  
James Roach, MCIP, RPP



# Land Use Planning Overview

## Outline

- Introduction to Land Use Planning
- Land Use Planning Examples
- NALMA Land Use Planning and Survey Units



# Part 1: Introduction to Land Use Planning



# Land Use Planning

## What is Land Use Planning?

The process of planning a scientific and orderly allocation of land, community resources, facilities, and services with a view to maintaining and improving the physical environment and the economic and social conditions of the community.

- *NALMA Land Use Planning Toolkit, 2017*



# Introduction to Land Use Planning

## Why is Land Use Planning important?

Land Use Planning is important to enable First Nations to reach their unique goals for their lands. Each First Nation must articulate a vision for their future, develop an appropriate plan, and then work towards making that plan a reality.

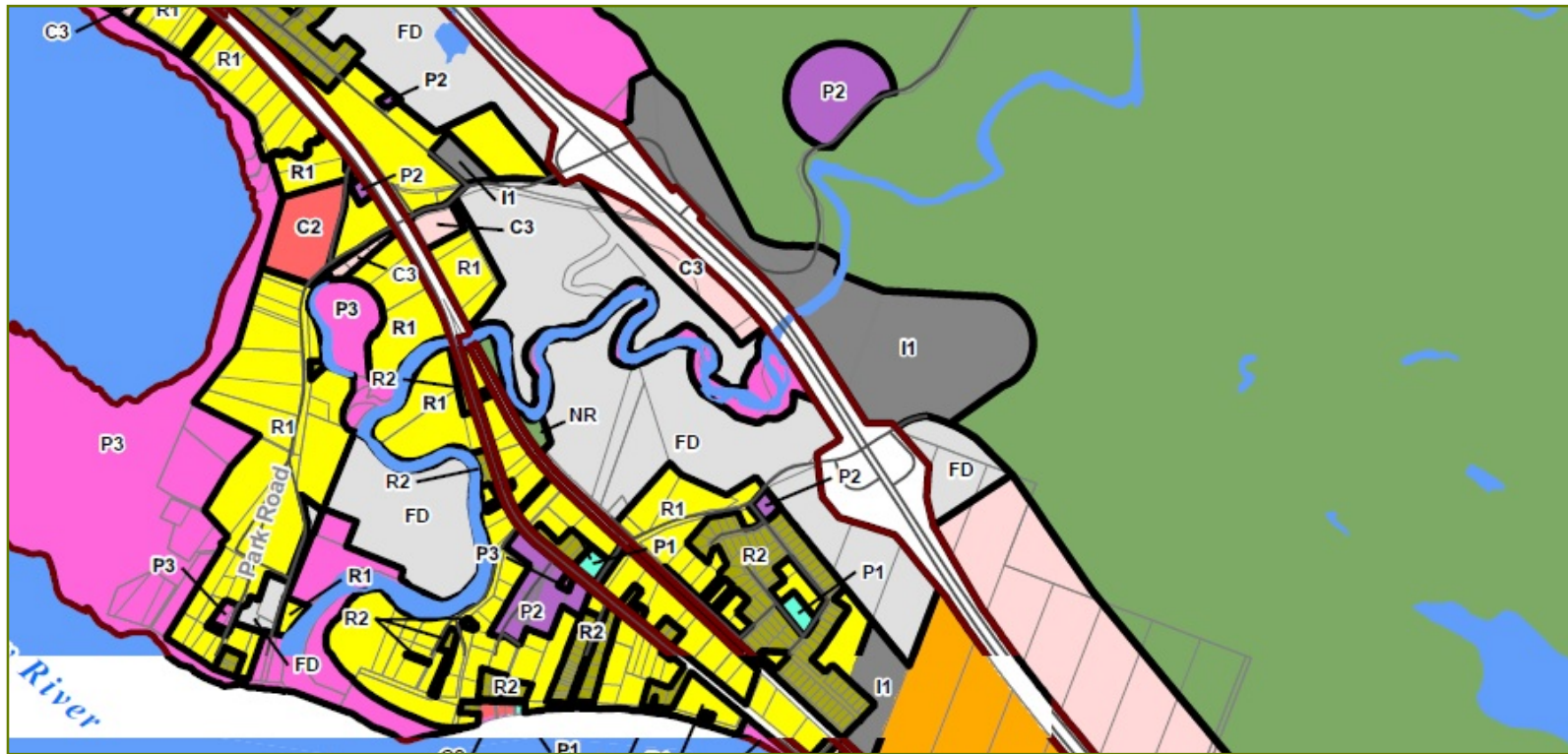
This will allow a First Nation to:

- ensure sustainable development
- affirm rights
- establish community values on the development of their lands
- determine the future use of natural resources



# Introduction to Land Use Planning

Where should Land Use Planning apply?



Ideally all the lands of the community or beyond.

Garden River First Nation Land Use Zoning Map (2015)

# Introduction to Land Use Planning

## When is Land Use Planning required?

.... all of the time!

It is not mandatory, however it is best practice for a First Nation to implement a Land Use Plan

- Particularly when planning and projects are being developed
- A LUP should be ongoing and evolve as required

# Introduction to Land Use Planning

## Who develops a Land Use Plan?

... the whole community participates.

However there must be leadership:

- A designated person, such as the Lands Manager, and (or),
- A committee made up of representatives from the major departments of the FN administration, council representation, and community members



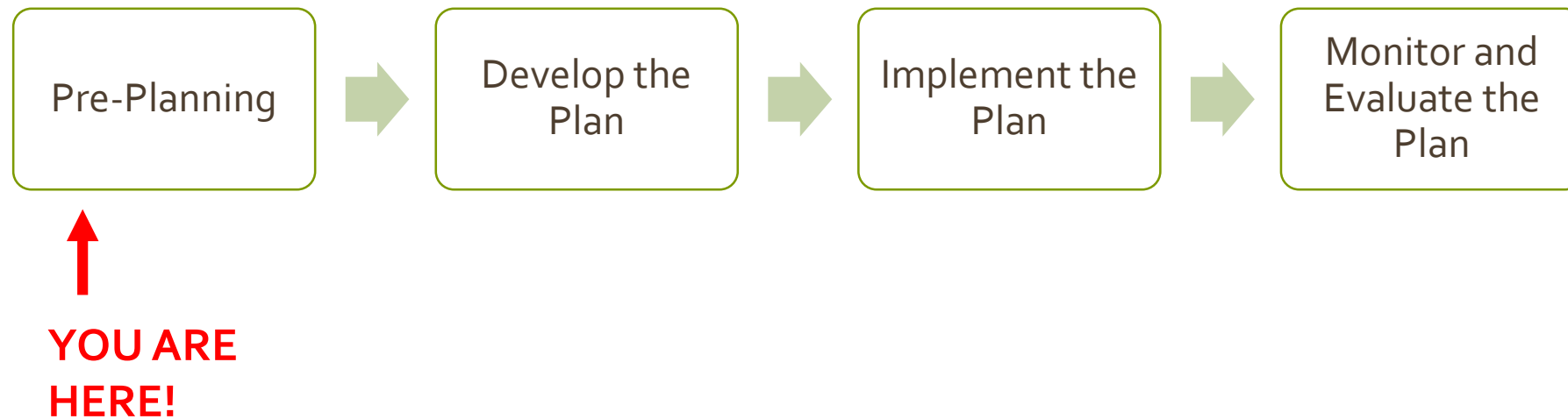
# Introduction to Land Use Planning

## How do you develop a Land Use Plan?

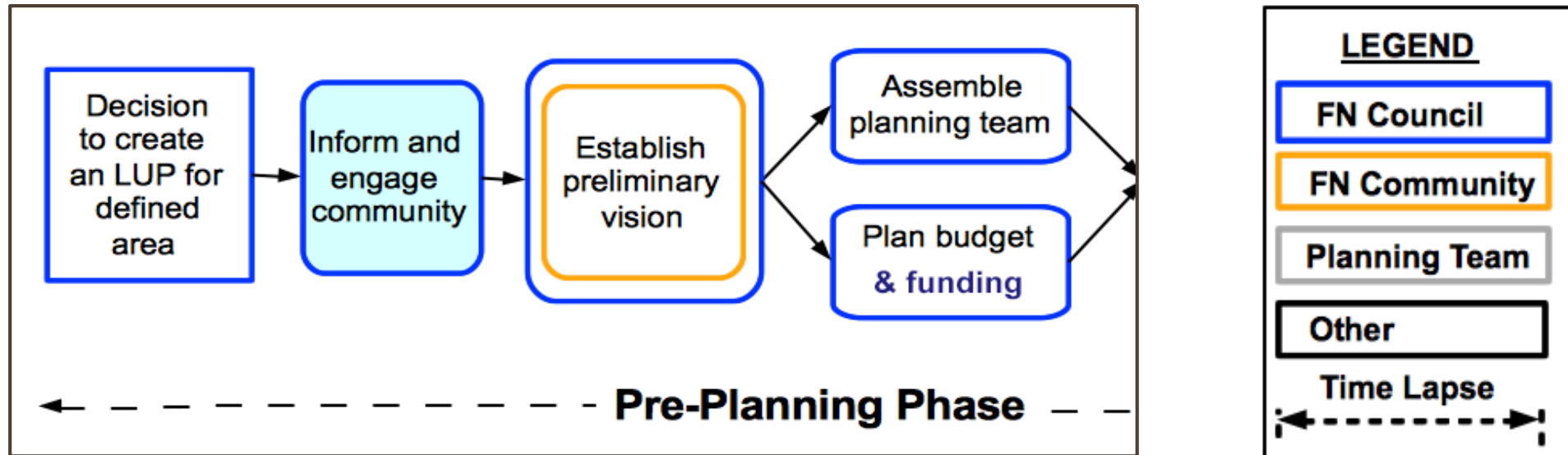
- Base it on long-range goals with multi-generational points of view
- Link it to other community initiatives such as:
  - Economic Development
  - Environmental Concerns
  - Infrastructure Improvements
  - Community Growth
  - Community Social and Cultural needs
- Make it transparent and easily understood
- Involve the membership at each step

# Introduction to Land Use Planning

## Basic Structure of a Land Use Plan:



# Pre-Planning Phase



A LUP will describe a community's vision and policies on how lands and resources should be used to meet the immediate and long-term needs of the community. Engaging the members in a variety of ways will not only encourage support and acceptance, but will be a source of solid suggestions.

# Introduction to Land Use Planning

Land Use Planning compliments other aspects of land management, such as:

- **Environmental Management**
  - Planning the use of the land in a way that does not damage the land, water, or air, and conforms to environmental legislation.
- **Land Surveys**
  - Planning the use of lands or parcels requires that the land is surveyed.
  - A survey is strongly recommended before subdividing or building on the land.
- **Traditional Territory Mapping**
  - Identify lands that hold traditional significance
  - Outline the extent of your community's traditional territory
  - Can apply to past, present, or future land uses

# Introduction to Land Use Planning

## Traditional Territory Mapping

Land Use Planning may also apply to **Traditional Territory**, and can help the community to assert rights and values on the development of that territory.

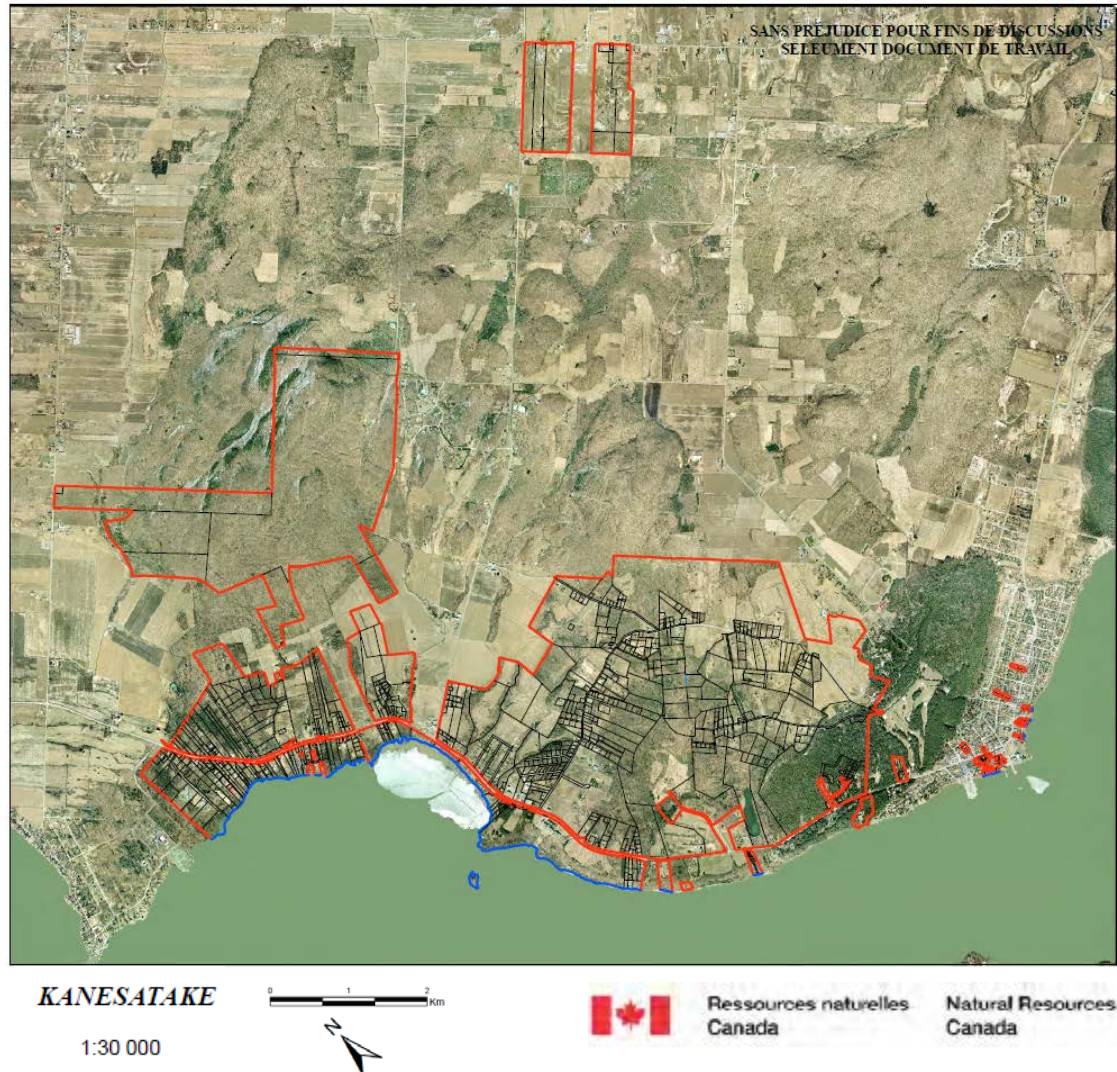
---

### Land use planning and mapping can help to...

- Document elders' oral history before more knowledge is lost.
- Determine shared use areas and reconciling boundary conflicts between neighbouring aboriginal communities.
- Provide evidence for court cases involving aboriginal rights and title.
- Negotiate co-management agreements.
- Negotiate protective measures and benefits from industrial development.
- Determine probable impacts of development.
- Provide baseline data for long-term community planning and resource management.
- Support administrative programs such as land use permitting.
- Develop education curricula

Tobias, T.N. 2000. *Chief Kerry's Moose*. Union of BC Indian Chiefs and Ecotrust Canada

# Things to think about...



- Where are there traditional-use lands?
- Where are there forests?
- Where is there water?
- Where are infrastructure improvements needed?
- Is tourism an option?





## Part 2: Land Use Planning Examples



# Land Use Planning Examples

## Little Grand Rapids First Nation



### Lands Management Plan, October 2012

[http://www.gov.mb.ca/sd/lands\\_branch/pdf/nikes/lgr\\_fn\\_final\\_lands\\_mgmt\\_plan\\_nov2012.pdf](http://www.gov.mb.ca/sd/lands_branch/pdf/nikes/lgr_fn_final_lands_mgmt_plan_nov2012.pdf)



# Little Grand Rapids Traditional Use Planning Area



## Legend

- Transmission Corridor
- Winter Road
- Waterbody
- First Nation Community
- Manitoba-Ontario Boundary

## Land Use Areas

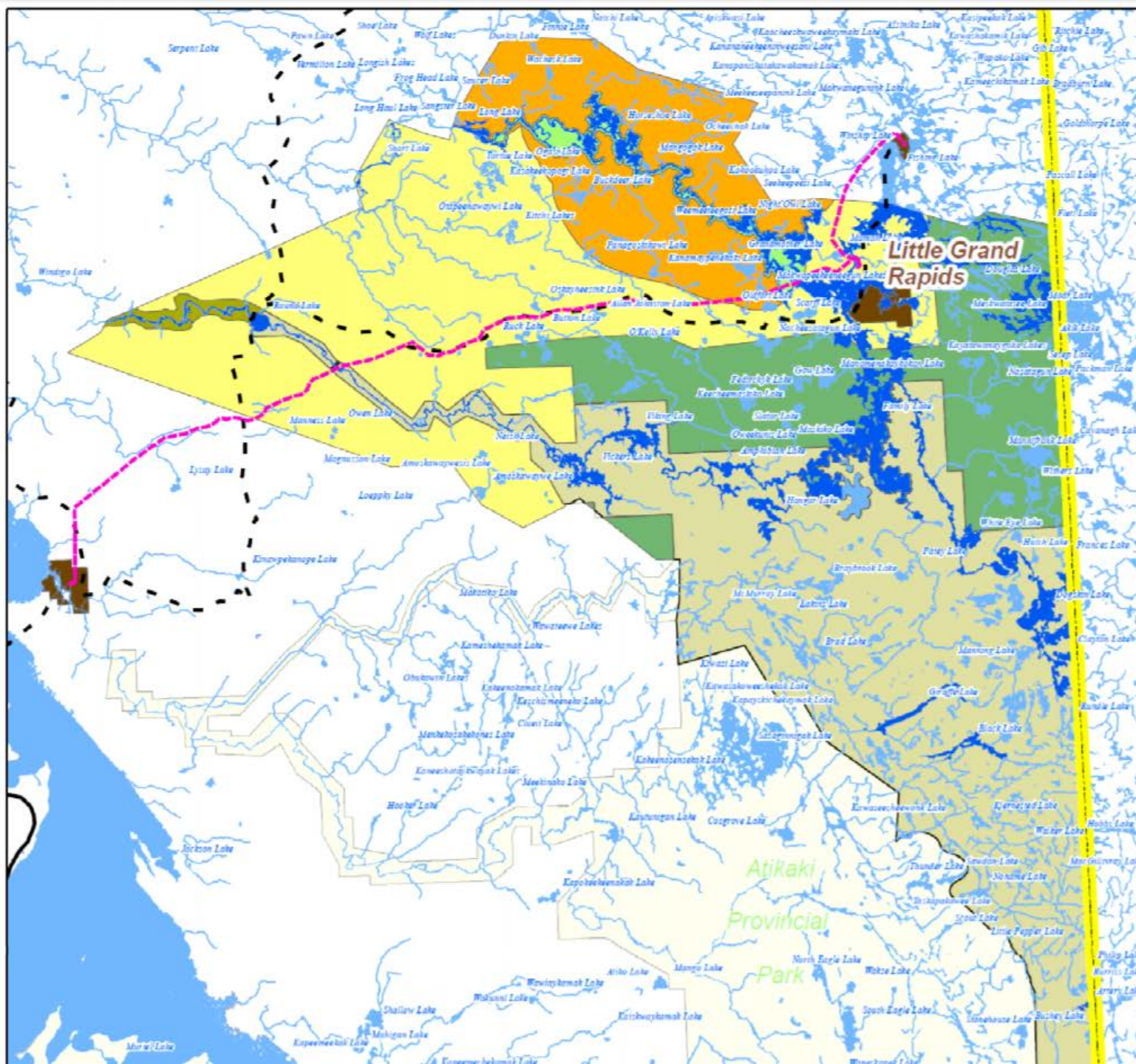
- Mishipawitigong Cultural Waterway Protected Area
- Commercial Area
- Enhanced Management Area
- Protected Area
- Pigeon River Protected Area
- Atikaki Portion of LGR TUPA
- Cultural Waterways

1:500,000

0 3.5 7 14 km



2012. Copyright. Published October 2012.



# Land Use Planning Examples

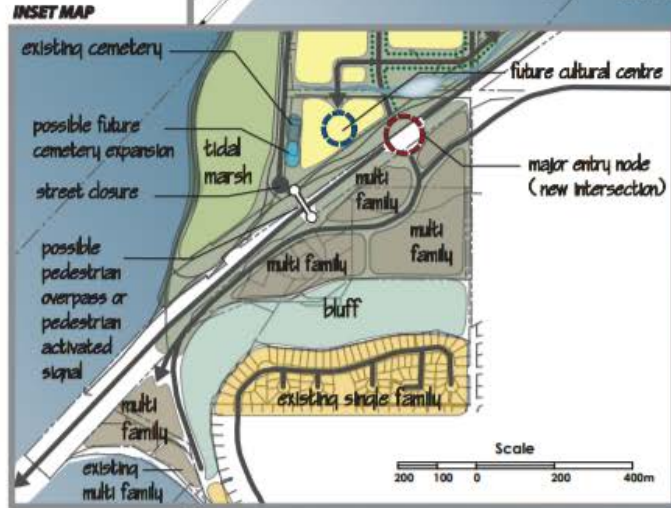
## Tsawwassen First Nation



## January 2009 Land Use Plan

[http://www.tsawwassenfirstnation.com/pdfs/TFN-About/Information-Centre/Strategic-Planning/TFN\\_Land\\_Use\\_Plan.pdf](http://www.tsawwassenfirstnation.com/pdfs/TFN-About/Information-Centre/Strategic-Planning/TFN_Land_Use_Plan.pdf)





- ROAD LAYOUT IS CONCEPTUAL ONLY AND IS INTENDED TO SHOW THE OPTIMAL LOCATION FROM A PLANNING PERSPECTIVE. FINAL DECISIONS ON ROAD PLACEMENT WILL DEPEND ON DISCUSSION WITH PROPERTY HOLDERS.

# Land Use Planning Examples

## Wahnapitae First Nation



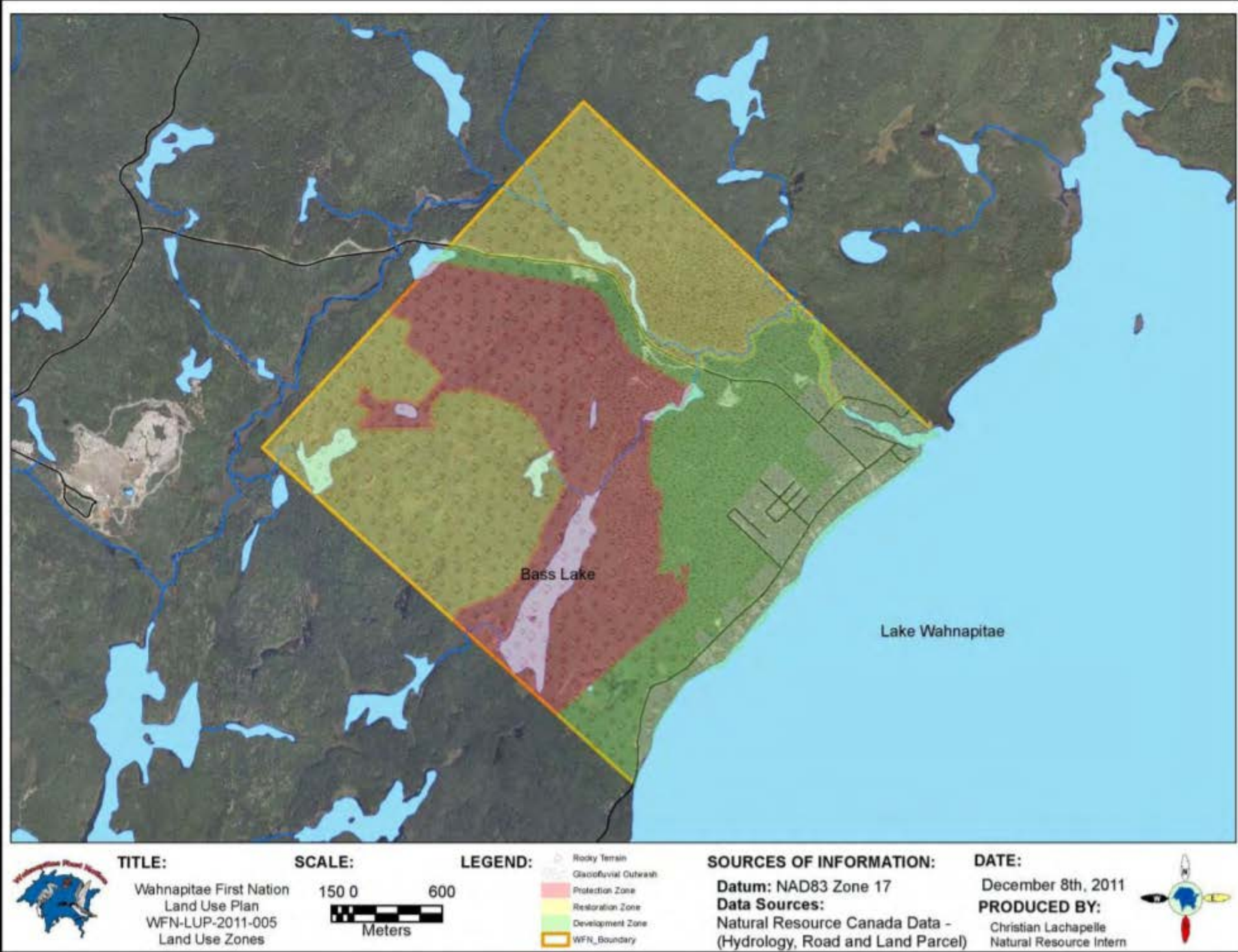
### November 2014 Ecosystem Based Land Use Plan

[http://www.wahnapitaefirstnation.com/images/stories/wfn\\_pdfs/development/WFN\\_Land\\_Use\\_Plan2014.pdf](http://www.wahnapitaefirstnation.com/images/stories/wfn_pdfs/development/WFN_Land_Use_Plan2014.pdf)



Wahnapitae First Nation  
Land Use Zones:

- Protection Zone
- Restoration Zone
- Development Zone



## Wahnapitae First Nation Land Use Plan:

Commercial

Commercial Recreation

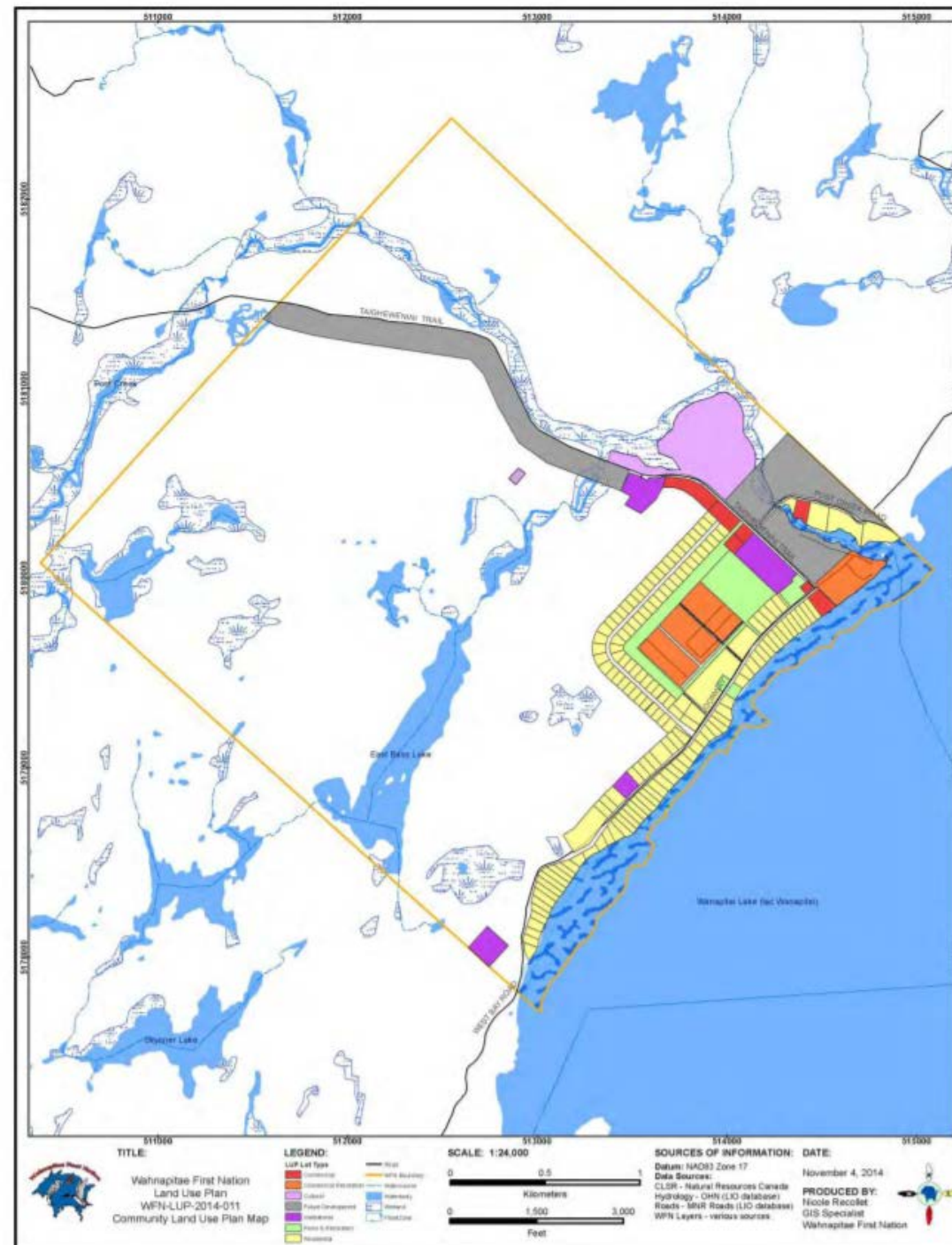
Cultural

Future Development

Institutional

Parks and Recreation

Residential







# Part 3: NALMA Land Use Planning and Survey Units



# NALMA

*Bringing Lands Managers Together*



## Mission

A national organization of First Nations Lands Managers which will actively network towards the enhancement of professional development and technical expertise in the functions of Lands Management and which will also incorporate First Nation values and beliefs in Lands Management always keeping in mind the grass-root practices when dealing with Lands Management.

# NALMA Objectives

- **DEVELOP**
  - Systems of lands management mechanisms and models which can be used by all First Nations
- **PROMOTE**
  - The incorporation of First Nation values, culture, and beliefs into Lands Management systems and processes
- **PROVIDE**
  - Technical expertise and guidance to First Nations regarding lands management issues
- **PARTICIPATE**
  - In the development and implementation of First Nations policies and procedures

# NALMA Members

NALMA's 8  
Regional Lands  
Associations:





# NALMA Land Use Planning and Survey Units

The NALMA **Land Use Planning (LUP) Unit** was launched in 2017 to address the need for LUP support. This unit conducts outreach activities, provides direct technical training, support services and capacity building opportunities to assist First Nations in the development of Land Use Planning.

In addition, the LUP Unit collaborates with the **NALMA Survey Unit** to administer contracts for survey projects identified from the land use planning process.



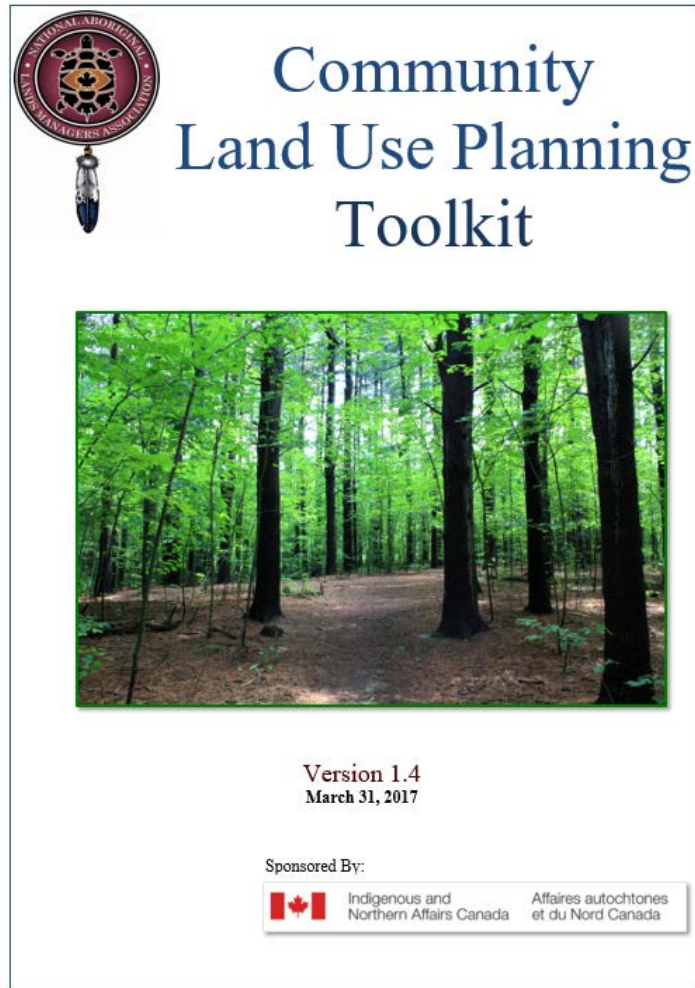
# NALMA Land Use Planning Unit



**The LUP Unit provides the following services:**

- Training workshops
- Community site visits
- Advisory services
- Referrals
- Providing information and tools
- Identifying funding support
- and more!

# NALMA Land Use Planning Unit



## Community Land Use Planning Toolkit

- The toolkit has been developed by NALMA as a practical aid for First Nations' use in developing a Land Use Plan for their community.
- Culture, tradition, type of regime, experience, available resources, and the wishes of the community are all factors that must be considered to help determine the type and extent of the Land Use Plan.

# NALMA Land Use Planning Unit

## 2017 LUP Toolkit Training Sessions:

**Toronto, ON**

August 15-17, 2017

**Calgary, AB**

October 3-5, 2017

**Winnipeg, MB**

September 19-21, 2017

**Quebec, QC (Bilingual)**

November 28-30, 2017

2018 locations will be announced soon. For more information visit [www.nalma.ca](http://www.nalma.ca)

# NALMA Land Use Planning Unit

## INAC Land Use Planning Initiative Funding Application

- Accepts applications throughout the year
- The NALMA Land Use Planning Unit can offer support for application completion



**INAC LAND USE  
PLANNING INITIATIVE  
APPLICATION**



# Contact Us – NALMA Website

To learn more about NALMA  
please visit our website

[www.nalma.ca](http://www.nalma.ca)

## General Inquiries

Phone: 705-657-7660

Toll-Free: 1-877-234-9813

Email: [info@nalma.ca](mailto:info@nalma.ca)



**National Aboriginal Lands Managers Association**

NALMA is a dynamic organization committed to providing efficient tools and resources to its members through the Regional Land Associations and Associate Members. We honour the members of each of the Associations for their hard work and dedication, which allows NALMA to undertake the many challenges that support and promote best practices in First Nation land management.

**ABOUT LAND MANAGEMENT**

Membership		NALMA News		April 2016 Events	
First Nations belonging to their respective Regional Lands Associations are automatically members of NALMA. We believe our members are our most valuable assets, and are the key to providing the very best networking, training, and technical expertise services across the Nation.		Stay up to date on land management news, and read about the latest updates within the National Aboriginal Lands Managers Association including employment opportunities. NALMA strives to promote and recognize First Nation Lands Managers for their successful work.		1 2 3 4 5 6 7 8 9 10 11 12 13 14 15 16 17 18 19 20 21 22 23 24 25 26 27 28 29 30 « Mar May »	